



UCSF

UCSF Library Support for Data Management and the New NIH DMS Policy

Ariel Deardorff, MLIS
Data Services Librarian
University of California, San Francisco



UCSF Campus

- ↳ Located in San Francisco, CA
- ↳ Research-intensive, graduate-only health sciences university
- ↳ #1 public recipient of NIH funds



UCSF Library Data Science Team

- 🔗 Build **foundational skills** in programming, statistics & bioinformatics, data engineering, and data management
- 🔗 Serve as a **campus hub** for education and support for data science
- 🔗 Goal is to **empower researchers** to do innovative & reproducible data-driven science



Geoffrey Boushey

Geoffrey teaches and consults on programming for data management and analysis, with an emphasis on Python, Unix, and SQL.

[BOOK CONSULTATION](#)



Ariel Deardorff

Ariel has worked as a librarian in academia, healthcare, and the NIH. She teaches and consults on data management and organization for reproducibility.

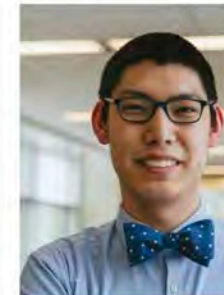
[BOOK CONSULTATION](#)



Fred Jiang

Fred is a student teaching assistant with the Data Science Initiative.

[CONTACT FRED](#)



Albert Lee

Albert is an instructional designer and analyst. He teaches and consults on programming for data management and analysis with R, Python, and AI applications.

[BOOK CONSULTATION](#)



James Lim

James is a student teaching assistant with the Data Science Initiative.

[CONTACT JAMES](#)



Karla Lindquist, PhD

Dr. Lindquist has expertise in statistics and bioinformatics. Please contact us if you are looking for training or support in these areas.

[CONTACT KARLA](#)



Preparing for the Policy

Implications of the new Policy for UCSF

- 🔗 Data sharing is a new practice for many of our researchers. We knew they would have questions about:
 - Selecting a data repository
 - Understanding what metadata standards might be relevant
 - Preparing data for sharing
- 🔗 There is a potential misalignment between NIH Data Sharing Policy and our existing campus data sharing guidance.

We needed to work behind the scenes

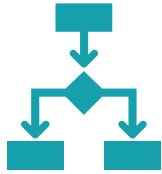
🔗 UCSF Library & UCSF Office of Sponsored Research convened a stakeholder leadership group.

- Included faculty and research administration

🔗 Goals of the group:

- Bring together key UCSF stakeholders to prepare for compliance with the new policy
- Update our local policies to align with the new NIH requirements
- Develop tools and guidance, communications and outreach plans
- Educate/train researchers and administrators
- Modify as necessary based on NIH implementation

Major outcomes of the stakeholder group



New process for approving de-identified data sharing



Policy guidance and resources



Outreach and training

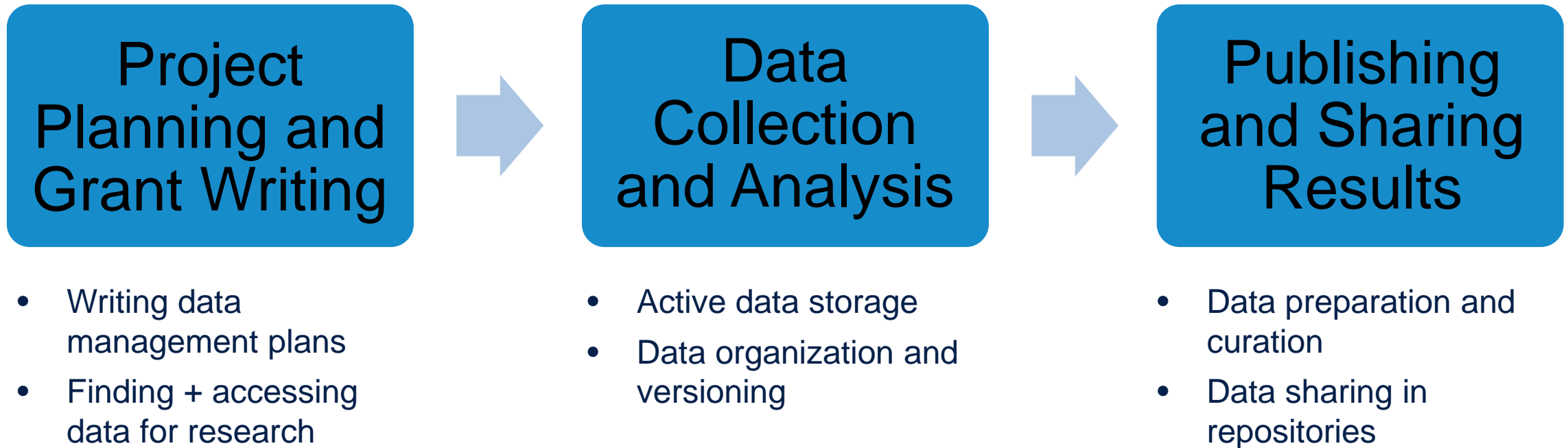


Grants management – control points for monitoring proposals



How we support our researchers

We focus on data management throughout the life of a research project



We provide support in a variety of modes



Resources and
Guidance



Education and
Outreach



1:1 Consultations

Resources and Guidance



- 🔗 Our goal is to translate policy language into **easy step-by-step guidance**.
- 🔗 This often requires a lot of behind-the-scenes coordinating with other departments to align our messages + connect researchers to the right office.
- 🔗 Some examples include:
 - [Campus resource page for the new NIH DMS Policy](#) - Links to UCSF DMS Plan templates, examples, and FAQs
 - [Guide to Reproducible Data Management](#) - Advice on finding, organizing, storing, and sharing research data
 - [De-identified Data Sharing Guidance](#) - Step-by-step guide to sharing de-identified data in repositories

Education and Outreach



🔗 Training + Education

- Monthly virtual workshops on data management and the new NIH Policy
- Responsible Conduct of Research data management sessions for graduate students and postdocs
- Customized in-depth trainings and workshops
 - Sharing Qualitative Data (co-hosted with the IRB)
 - Understanding NIH institute data sharing requirements (especially for NIMH)
 - Data sharing for sensitive research

🔗 NIH DMS Policy Outreach efforts

- Monthly news items in the Library newsletter and UCSF-wide monthly research office email
- Presentations at 40+ faculty and departmental meetings and grand rounds

1:1 Consultations

- 🔗 For more hands-on support and deeper dives
- 🔗 Frequent topics:
 - Selecting a repository and understanding costs
 - Finding a relevant metadata standard
- 🔗 Often includes referrals to other team members (hands-on data science support) or other groups on campus:
 - Understanding informed consent (refer to IRB suggested language)
 - Signing data use agreements (refer to Industry Contracts)

We build connections across campus



- We don't always know the answer, but we generally know who does.
- Our goal is to help researchers navigate the research bureaucracy at UCSF.
- We work closely with:
 - Institutional Review Board (IRB)
 - Clinical and Translational Science Institute (CTSI)
 - Compliance Office
 - Privacy Office
 - Research IT
 - Grants Office

Knowledge gaps and how librarians can help

- 🔗 We are seeing researchers struggle with:
 - Understanding NIH DMS Policy requirements
 - Selecting an appropriate data repository
 - Understanding costs and work and time associated with data management
- 🔗 Researchers should check with their local data librarian to see:
 - Is there DMS Policy guidance from your library?
 - Do they provide hands-on data curation and preparation support?
 - Can you meet with a librarian to ask questions about your plan?

UCSF

University of California
San Francisco