



National Institute of
Diabetes and Digestive
and Kidney Diseases

Pre-Application Webinar

RFA-DK-22-017

NIDDK Information Network Coordinating Unit: dkNET-CU

Dec 13, 2022



National Institute of
Diabetes and Digestive
and Kidney Diseases



National Institute of
Diabetes and Digestive
and Kidney Diseases

dkNET program team



Kristin Abraham, PhD
abrahamk@niddk.nih.gov



Corinne Silva, PhD
silvacm@niddk.nih.gov



Xujing Wang, PhD
xujing.wang@nih.gov



Ashley Xia, MD, PhD
ashley.xia@nih.gov



Agenda

1. Presentation ~ 30 min

- Overview of the dkNET program (currently in its 10'th yr)
- The renewal: objectives and requirements
- FAQ and answers

2. Open Q&A ~30-45 min

3. Breakout groups (interested people can find collaborators)

- During the webinar: use chat to broadcast your interest and expertise, or to directly message anyone

**** webinar is recorded for NIDDK internal review, will not be shared**

**** slides & a FAQ document will be shared through the registration site**



National Institute of
Diabetes and Digestive
and Kidney Diseases

A BRIEF OVERVIEW OF DKNET



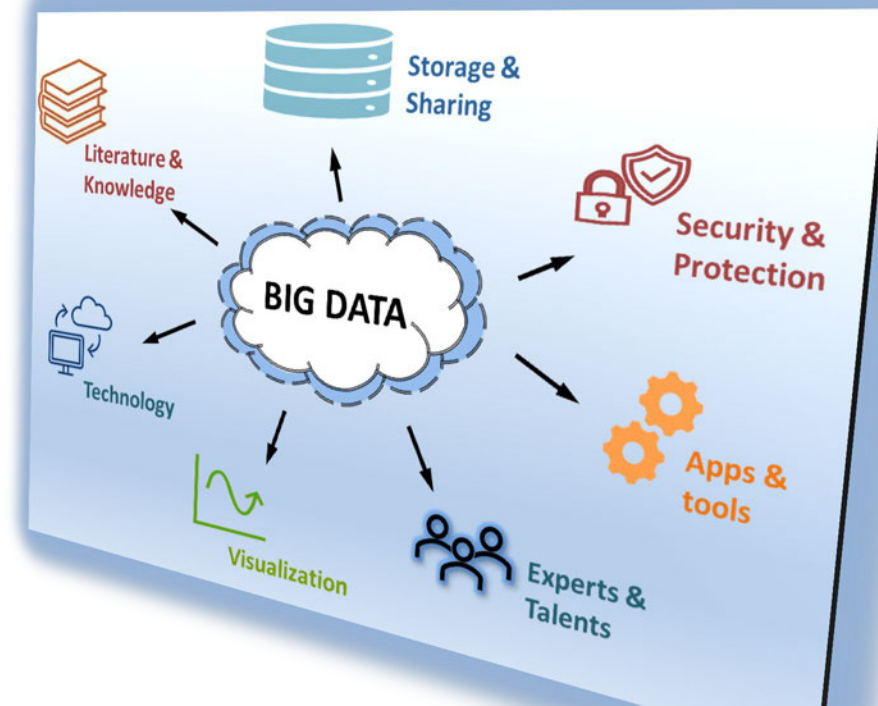
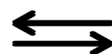
National Institute of
Diabetes and Digestive
and Kidney Diseases



A brief history of the dkNET

Established in 2011, to address community's pressing needs in Data science, by

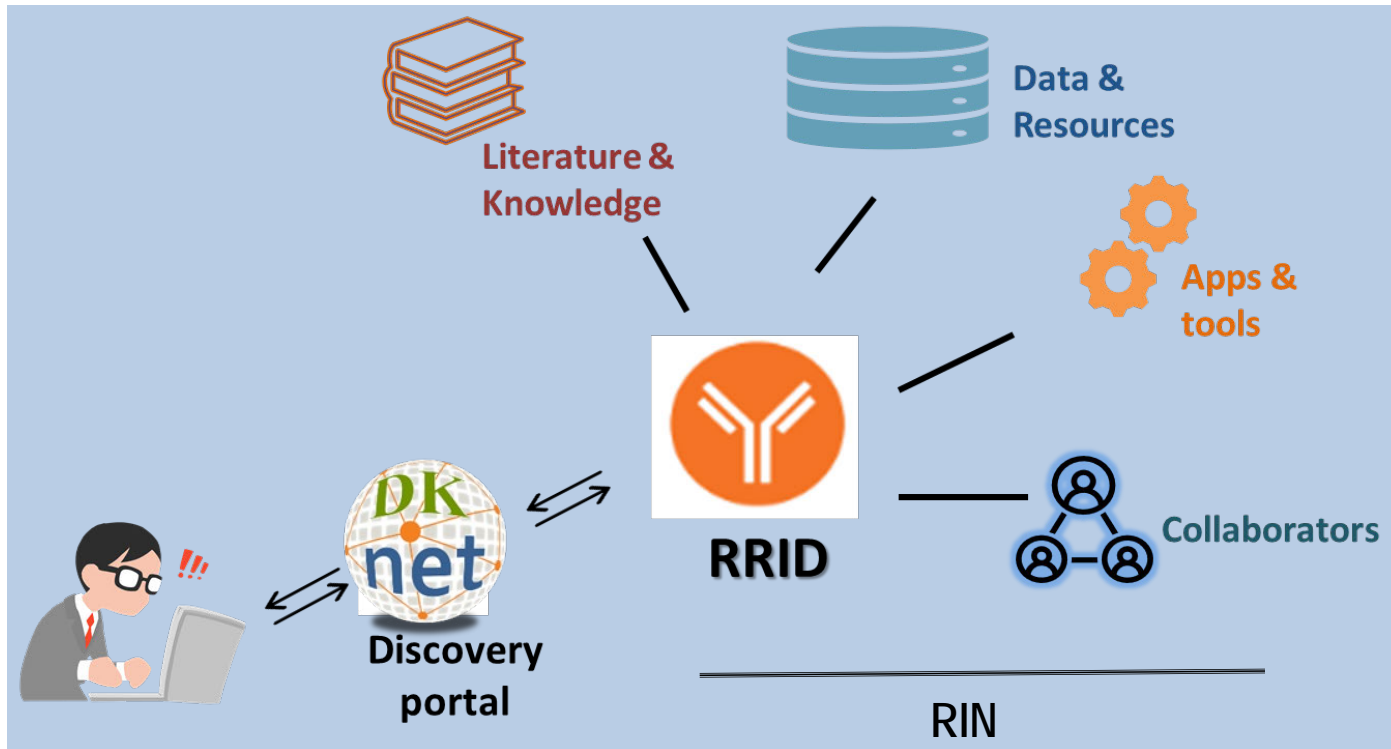
- Providing the **discovery portal** for finding relevant datasets, information, and resources
- Facilitating information sharing between NIDDK-supported resources and the scientific community
- Promoting FAIR practice, and Rigor & Reproducibility (R&R)
- Building community and workforce



dkNET: funding cycle 1

2011-2017

[RFA-DK-11-030](#): “to support development of a web portal...to facilitate information sharing between NIDDK-supported resources and the scientific community, ...”



RIN: Resource Information Network

RRID: Research Resource IDentifiers

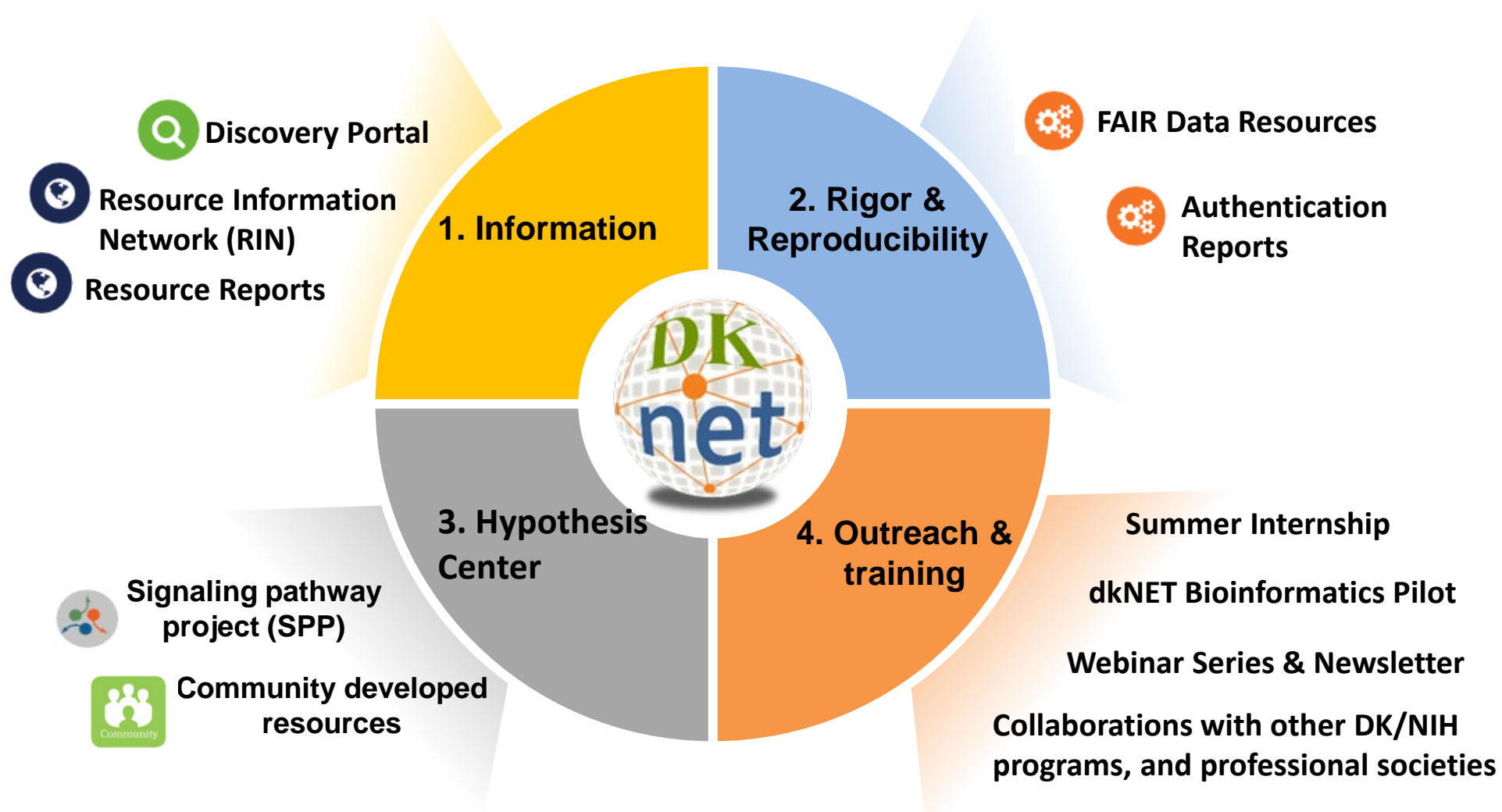
Main goal: not to build resources, rather, to connect researchers to resources

Status

- > over 278 resources, 800M searchable entities,
- > 13,000 visits in 2021

dkNET: funding cycle 2

RFA-DK-17-010, 2018-2023



An example tool: FAIR Resource Report



I'm planning my experiment, and would like to find and evaluate key resources.



I'm publishing a paper, and would like to find

- RRIDs for citing key resources
- Where to put my data

Resource Report

For antibodies, plasmids, biosamples, cell lines, models, tools and services:

- Citations of usage and mentions
- Validated or recommended?
- Who are using the resource? Do they have issues?
- Users near me

FAIR Data repositories

- List of DK relevant repositories, recommended by NLM and various journals
- FAIR Standards
- Data maintenance
- Data size limit and cost
- Dynamic database

3. the Hypothesis Center

— A FAIR Platform for Collaboration & Discovery



- A hub for data-driven hypothesis generation
- A collection of *community-built* tools for exploration of different datasets
- Promoting findability and awareness
- Providing information & tutorials
- Facilitating utilization & collaboration



Signaling Pathway Project



4. Community outreach and workforce development



Building a community

- Newsletters (1-2/month)
- Seminar series (~ 30 resource webinars a year)
- Social media networks
- dkNET annual meetings
- Outreach activities at NIDDK large consortia's annual meetings (HIRN, ...)
- Outreach activities at major professional society meetings (Endo, Cell Bio,...),

Opportunities to the next generation scientists

- dkNET Summer of Data Student Program
- dkNET New Investigator Pilot funding Program in Bioinformatics

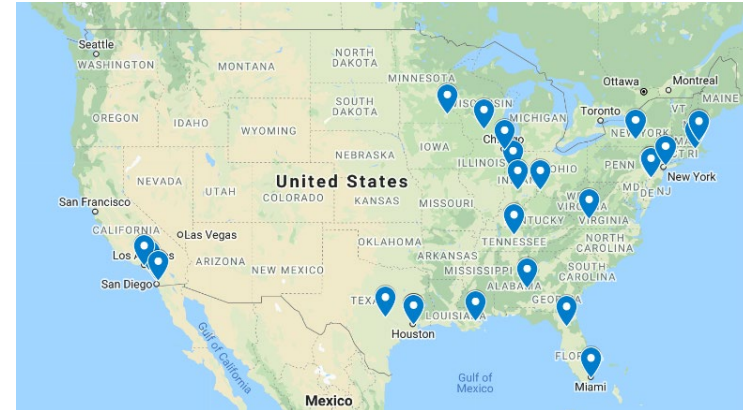
Summer Data Student Internship 2019-



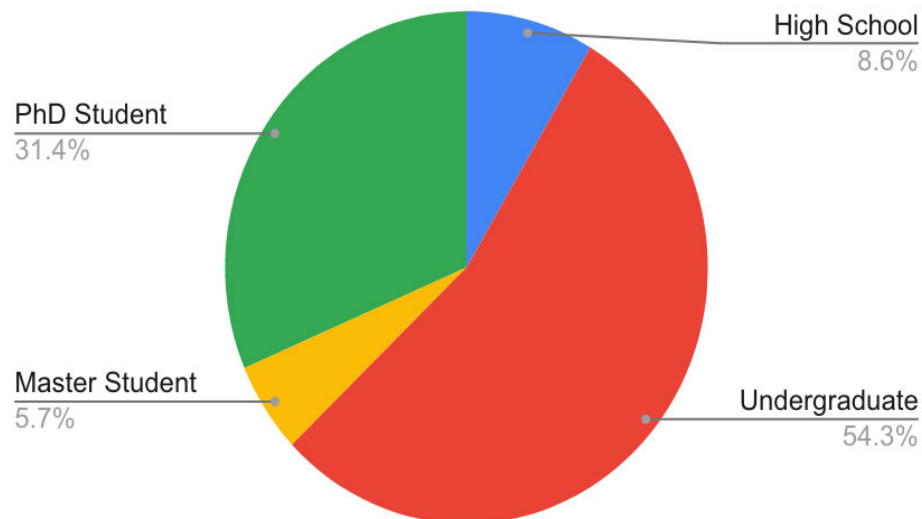
Program Duration

Total # of students trained (2019-2022): ~50

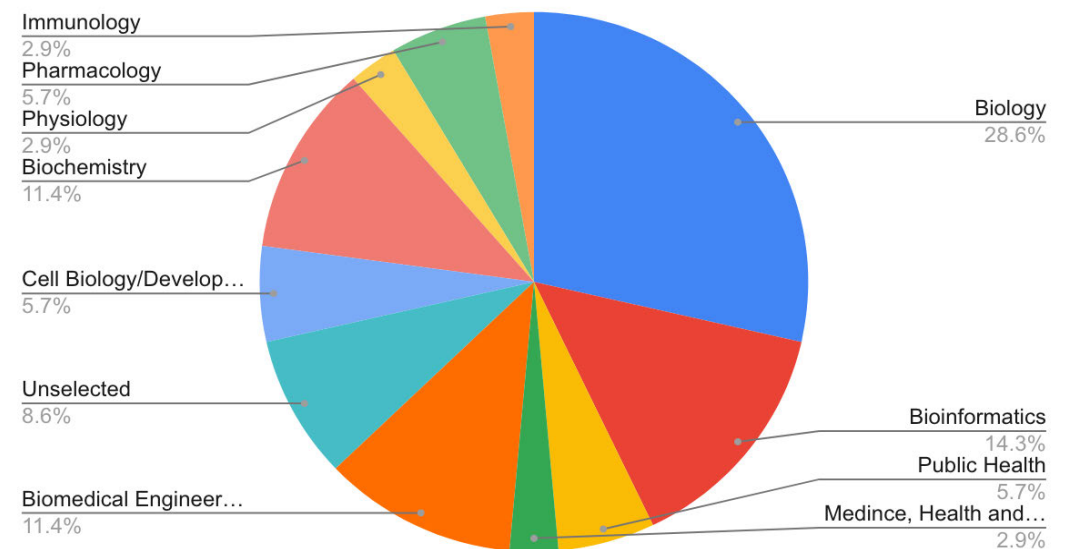
Annual milestones in engaging minority serving institutes and students from diverse backgrounds



Student Type (2019-2021)



Student Major (2019-2021)



dkNET New Investigator Pilot Program in Bioinformatics

2020-2022

- **Objective:** support **new investigators** to apply **innovative bioinformatics** approaches to important research problems in Diabetes, Endocrinology and Metabolic Diseases
- \$150,000 direct cost/yr, 1-2 years
- Applications received : 32
 - Career Stages**
 - 26 ESIs, 6 New Investigators
 - Area of training:**
 - 12 in (experimental) endocrinology or related
 - 20 in quantitative sciences
- **Awards made: 13**
 - 2020: 3 awards, 2021: 5 awards; 2022: 5 awards



National Institute of
Diabetes and Digestive
and Kidney Diseases

RAF-DK-22-017: THE RENEWAL



National Institute of
Diabetes and Digestive
and Kidney Diseases

Purpose

RFA-DK-22-017:

“The purpose of this Funding Opportunity Announcement (FOA) is to **continue development and expansion** of the NIDDK Information Network (dkNET) under the direction of the dkNET Coordinating Unit (dkNET-CU). dkNET supports the NIDDK community’s needs in data science by providing an information portal that connects users to data, analytical tools, and other biomedical research resources. Additionally, dkNET supports researchers by providing a hub for data-driven hypothesis generation; a suite of tools that assist users in FAIR (Findable, Accessible, Interoperable, Reusable) practice, and in improving rigor and reproducibility in research; and a variety of programs to enhance community engagement and workforce development. The dkNET-CU will be responsible for providing the scientific direction, vision, and administrative management to advance dkNET goals.”



Objectives of the renewal

The dkNET platform

- Continue to develop and enhance its components
- **Expand to support DK-specific data types and data science needs, including the need in leveraging Big Data science to accelerate innovation and discovery (the hypothesis center)**
- **Bringing in more advanced data science technologies (AI/ML, cloud, open science)**

The people and stakeholders

- **Recruit to the dkNET-Coordinating Unit domain experts in both basic and clinical diabetes research**
- **More** actively engage the community to contribute domain knowledge, datasets, and data science resources.
- **Engage the community to participate in decision making and governance**
- **Improve collaborations** with NIDDK central repository and other NIDDK-funded programs

The workforce development

- **More actively** outreach to and engage with the community, to recruit students/trainees from diverse backgrounds
- **Enhance and expand** collaborations with related trans-DK and trans-NIH programs

Budget

\$2M TC/yr for 5 years

(from the \$1M TC/yr in the current funding cycle)

Does not include the budget for the bioinformatics pilot funding program



National Institute of
Diabetes and Digestive
and Kidney Diseases

FAQ



National Institute of
Diabetes and Digestive
and Kidney Diseases

Is the competition open

Yes

Both the current team and new teams can apply

MPI team?

Under “Research Strategies” of FOA (RFA-DK-22-017)

“the application **must be** submitted as a **multiple PD/PI application**, with a **minimum of 2 PDs/PIs** that include at least one computational scientist and one diabetes researcher”

The team should have

- a demonstrated **track record** in developing community resources such as biomedical data repositories and knowledge portals;
- **expertise** in developing and utilizing modern data science technologies and platforms;
- **deep appreciation** of the important research questions in diabetes, endocrinology and metabolic diseases;
- **understanding of the unmet needs** in data science of the NIDDK community; knowledge of the generation and utilization of NIDDK-specific data types;
- **experiences** in effectively communicating, outreaching, engaging with scientists from diverse backgrounds, including scientists from underrepresented groups;
- **familiarity** with the NIDDK-funded programs
- **Serious commitment**

No requirement regarding seniority of the PIs

Foreign collaborators

Allowed

<https://grants.nih.gov/grants/guide/rfa-files/rfa-dk-22-017.html> :

Section III. Eligibility Information

- **Foreign Institutions**
- Non-domestic (non-U.S.) Entities (Foreign Institutions) **are not** eligible to apply.
- Non-domestic (non-U.S.) components of U.S. Organizations **are not** eligible to apply.
- **Foreign components**, as [defined in the NIH Grants Policy Statement](#), **are allowed**.



National Institute of
Diabetes and Digestive
and Kidney Diseases

OPEN Q&A



National Institute of
Diabetes and Digestive
and Kidney Diseases

[illegible]